



THE CONE CHRONICLES

ISSUE 4 | APRIL 2024

LOOK TO THE SKIES

If you love space and all things happening way above the planet, April is an exciting month for you!

By now we've all heard about the 2024 Total Solar Eclipse happening on Monday, April 8. According to Abbey Interrante with NASA's Goddard Space Flight Center, this year's event can be seen by more people than the 2017 solar eclipse. In 2017 the path of totality (where the moon's shadow completely covers the sun) ranged from 62 to 71 miles wide. This year, the moon will be closer to the earth, increasing the width of the path to between 108 and 122 miles wide. The path's direction also passes over more densely populated areas, almost tripling the number of people estimated to live in the path of totality.

In addition to the solar eclipse, check out what else the skies promise during the month of April:

Jupiter will be visible all month, appearing as "a brilliant, steady light low in the western sky following sunset."

Mars and Saturn will be rising together mid-month and will be at their closest the 10th & 11th.

Lyrid meteor shower

- Shower will last from April 15 - 29
- Best time to watch, late evening April 21 to dawn April 22
- What you can expect to see:

"In a moonless sky, about a quarter of Lyrid meteors leave a persistent train, a trail of ionized gas that glows for a few seconds after the meteor has passed."

Sources:

science.nasa.gov
earthsky.org



THIS MONTH....

UPDATES

Brand New Padlocks

- Blue is the New Orange

TRAINING TIPS

Refueling Vehicles

- KT Fuel Cards & Codes
- Diesel vs Gas
- "Home" Stations

SPONSOR SPOTLIGHT

Everlight Solar

- Lake Monona 20K & 5K

The Healthy Baking Company

- LOTI, Cottontail Classic, & more???

UPCOMING EVENTS
ANNIVERSARIES
NEW HIRES
AND MORE....



UPDATES

NEW PADLOCKS

That headline pretty much sums it up.....we replaced our padlocks.

By the time you work your next event the orange locks & keys should all be replaced with bright blue beauties as pictured to the right. Every set of vehicle keys will include one blue key and all the padlocks are universal, so if you need to unlock a box truck, enclosed trailer, or trailer lock, you should be able to grab any set of vehicle keys.

If you happen to have an orange padlock key, you can toss it.

*****Please do not use it on the new locks.*****



TRAINING TIPS

REFUELING VEHICLES

Kwik Trip Fuel Card - Each RDE vehicle has a KT Fuel Card, tucked inside the zipper pouch on the driver's visor. The fuel card can be used at all fueling stations in WI (and many outside WI). To use the card:

- Get current odometer reading before leaving cab of vehicle
- Swipe card same as any other payment card
- Enter driver ID (your fuel code) and odometer as requested by the pump and fuel up (no receipt needed)

Return fuel card to pocket on visor

Kwik Trip Fuel Code - Each RDE employee has a 5-digit fuel code which can be found by logging into your Paychex Flex app --> Drop-down menu in upper left --> My Profile --> Custom Fields

"Home" Gas Station - Unless you're told otherwise, staff are expected to refuel vehicles before returning them to RDE. The station closest to the warehouse with both gas and diesel is the Speedway near the Wal-Mart Super Center.

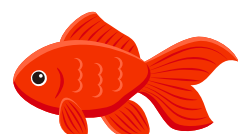
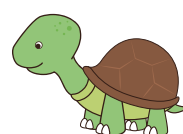
- Diesel - enter via north driveway
- Gas - enter via main driveway/entrance
- Always exit Speedway to your left, turn right on Gisholt/Industrial and through the roundabout



NOTE: The Kwik Trip north of the beltline on W Broadway can be used to fuel *gas* vehicles

REMINDER: RDE vans are gas, Kubota is premium gas and everything else is diesel (pickups, traffic, box trucks). If you aren't sure, always take the time to ask. The wrong type of fuel can cause \$\$\$\$\$\$ in damage to a vehicle so it's better to call to confirm fuel type rather than asking for the best tow company to use.

Do you have a training tip you'd like to share? Is there something you don't know how to do or you want to know more about? Email me at Meredith.Shelton@RaceDayEvents.com and I'll make sure it's included in a future issue.





SPONSOR SPOTLIGHT

EVERLIGHT SOLAR

"We use solar energy to simplify your life, save you money, and clean up the environment...We offer a cleaner and safer alternative so that we can all feel good about energy again." Everlight Solar has joined RDE as the Athlete Tracking and Mile Marker sponsor for Lake Monona 20K & 5K. If you're working course at LM20K, you'll get to see their logo, a LOT!



Everlight Solar

THE HEALTHY BAKING COMPANY

Looking for your new favorite "real food bars to power your day...anytime of day"? Look no further. Whether you want vegan, gluten-free, nut-free, or no refined sugars this company has a tasty option. So far they have donated bars for finish line food for Luck of the Irish and Cottontail Classic. Fingers crossed they'll send bars for future events.



Have a great idea for a future event sponsor? Send it over to ryan.griessmeyer@racedayevents.com

UPCOMING EVENTS, ANNIVERSARIES.....

UPCOMING KEY EVENTS

APRIL

13th	APDA Half Marathon
27th	Crazy Lega Classic 8K
28th	NYCRuns Brooklyn Half Marathon

MAY

4th	Lake Monona 20K & 5K
10th & 11th	Traverse City Trail Running Festival
19th	Cellcom Green Bay Marathon

APRIL ANNIVERSARIES

1 Year	Meghan Will
2 Years	Matt Haynes
4 Years	Dave Furlan
12 Years	Andrew Porn

MARCH NEW HIRES

Hernán Ballard	Brianna Moling
Nelsen Labansky	Kyle Riphon
Maddy McKeown	Tyler Zandstra

2024 BASIC EVENT SKILLS TRAINING

What is it? All the skills needed to *make weekends awesome*

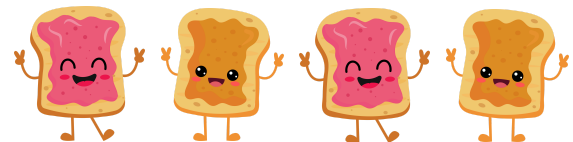
When is it? Tuesday, April 16

What time is it? 5:30 pm - 8:00ish

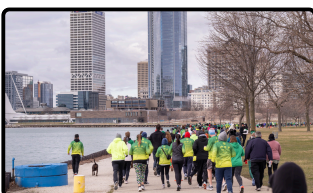
Where is it? RDE Warehouse at 2829 Royal Ave, Madison

How so I sign up? Submit an Add Shift Request via SubItUp or email Meredith.Shelton@RaceDayEvents.com

What else do I need to know? Designed for brand new Weekend Warriors, this training will cover: Site (truss, barricades, scrim & sound system), Timing Equipment, and Course Marking/Coning. This is a hands-on training and parts will be done outside so wear appropriate clothes that can get a little dirty; *closed-toe shoes are required.*



April 2 - National Peanut Butter & Jelly Day



WRS: Luck of the Irish, 3/17/24



And just like that, another Winter Run Series is in the books!!